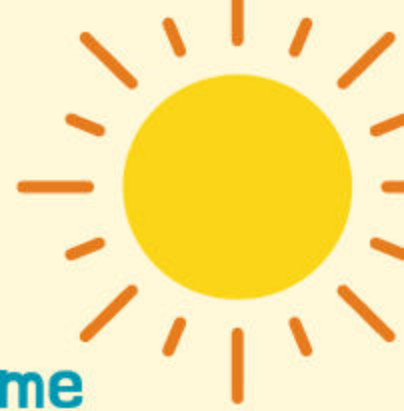




Home-Start



Home-Visiting Play Programme

The programme has been developed for Home-Start to connect with the families on our waiting list for our services. The play programme will provide an opportunity to enhance parents' skills in supporting their child's development in a relaxed and fun atmosphere.

Home-Start is a family support service that operates in Dublin 15. Home-Start aims to provide practical and emotional support to families with young children who may be experiencing difficulties or facing challenges.

At the heart of the programme is the belief in the power of play to strengthen the bond between parent and child and to promote a strong attachment relationship.

The programme will run for 6 weeks, with the home visitor attending your home weekly for 50 minutes. The play will be based on simple play interactions tailored to you and your child's needs, to support the child's holistic development with an emphasis on social and emotional development

EMAIL ADDRESS

emilyhomestartcreche@gmail.com

CONTACT NO:

01 820 5444

01 820 5203

